

White Cap Celebrates Women in Construction Week by Showcasing Women-Focused PPE at Atlanta NAWIC Hard Hats and High Heels Social



On March 25, 2022, the Atlanta Chapter of the National Association of Women in Construction (NAWIC) hosted their annual Hard Hats and High Heels Social. During this event, a fashion show was held where they showcased industry-related work wear and Personal Protective Equipment (PPE) for women.

White Cap's Maven Project, a specialized line of women's PPE, was modeled throughout the fashion show. White Cap also hosted a booth, where Derrick Caudell, Assistant Branch Manager and Jaja Greene, Lead Inside Sales Associate handed out branded merchandise to attendees and displayed the Maven Project PPE that was worn during the show.

Throughout the night, speakers of the event recognized White Cap as revolutionizing the industry with our Maven Project. We are honored to not only be given the opportunity to showcase our women-focused PPE, but for the acknowledgement of our products changing the construction industry to be more inclusive for women.

Thank you to NAWIC for the opportunity to be involved at the Hard Hats and High Heels Social!

Check out the Maven Project product offerings:



WHITE CAP

BUILDING TRUST ON EVERY JOB.™

Better Fitting Safety Gear = A SAFER CREW

Ill-fitting items could result in injury and/or impair performance. Our supplier partners have smaller sizes available and gear cut for women. See your Branch or Account Manager for item availability or special order options.

See Account Manager/Branch for Pricing

Blue Mirror Lens Mini ZTEK Safety Glasses

Blue Mirror Lens Mini ZTEK Safety Glasses in a design better suited for women's face shape.



RECEIPTION

G-Tek® Supreme™

Supramax Kevlar® Blended Glove with Textured MicroSurface Grip on Palm & Fingers



AVAILABLE IN XS-XLL
1212035

G-Tek® PolyKor™

Supramax Kevlar® Blended Glove with Polyurethane Coated Flat Grip on Palm & Fingers



AVAILABLE IN S-XLL
1212035

Premium Black Series Women's Heavy Duty Surveyors Vest

KISHIGO

- Adjustable waist slits to ensure a personalized fit.
- 4" slit at top for mobility.
- Class 2



AVAILABLE IN S-XLL
1212021M

Women's Mesh Vest

KISHIGO

- Reflective silver mesh vest for better visibility in low light conditions.
- Checked sides to ensure a perfect fit.
- Class 2



AVAILABLE IN S-XL
1212029M

Xplorer Harness with OC Chest, TB Waist Pad, OC Legs

GUARDIAN

- Current with long torso body contour for greater comfort.
- Lightweight aluminum suspension points and dedicated DRL, horizontal tie point.
- Sub-pulley assembly increases comfort during productivity.



AVAILABLE IN XS-XLL
1212050

Series 5 Harness with OC Chest, TB Legs, (3) D-rings (Borsal, Side)

GUARDIAN



1212786

PRODUCT NO.	RECEIPTION
1212750A	OC Chest, TB Legs
1212756A	OC Chest, TB Legs, TB Waist Pad

800.944.8322 | WhiteCap.com

Subject to availability at these locations: Downtown ATL, Marietta, College Park, and Norcross. Products not in all stores. White Cap is not responsible for errors or omissions. Pictures may not represent advertised items. White Cap reserves the right of resale and the amount of items sold.

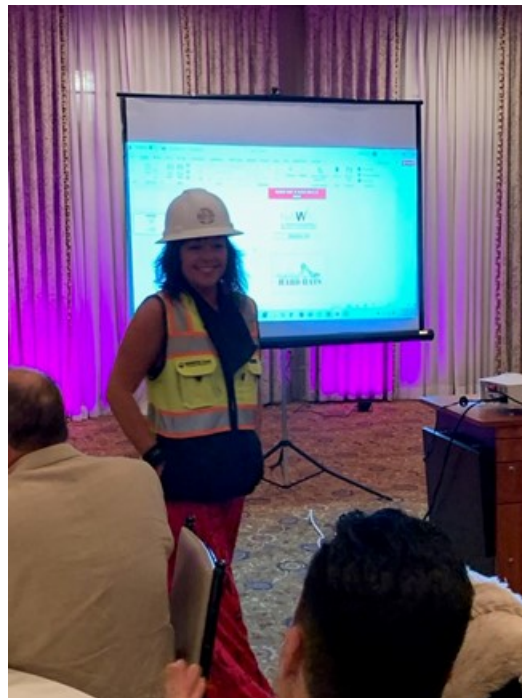


NAWIC model posing in White Cap's Maven Project PPE

Left to right: Derrick Caudell, White Cap Assistant Branch Manager, Tyson Street, Atlanta-area Bosch Representative, and Jaja Greene, White Cap Lead Inside Sales Associate



White Cap's Maven Project booth



NAWIC model posing in White Cap's Maven Project PPE

Interested in learning more about joining White Cap? [Click here.](#)

<https://about.whitecap.com/2022-03-25-White-Cap-Celebrates-Women-in-Construction-Week-by-Showcasing-Women-Focused-PPE-at-Atlanta-NAWIC-Hard-Hats-and-High-Heels-Social>